

abetone



abetone



60x60

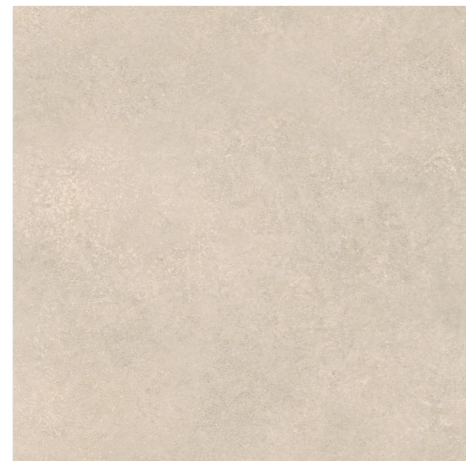
R10

B

V3

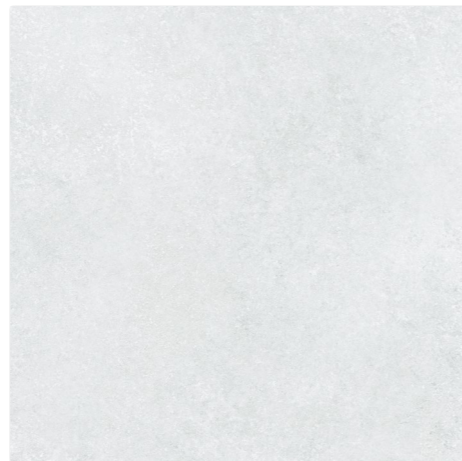
R+

9mm



DAK62840
mat | matt

PEI 4



DAK62837
mat | matt

PEI 5



DAK62838
mat | matt

PEI 4

abetone



60x60

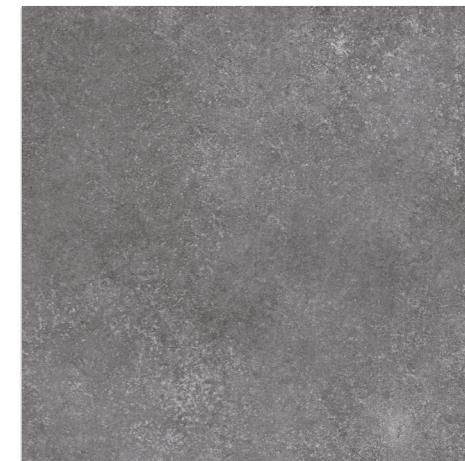
R10

B

V3

R+

9mm



DAK62839
mat | matt

PEI 4

30x60

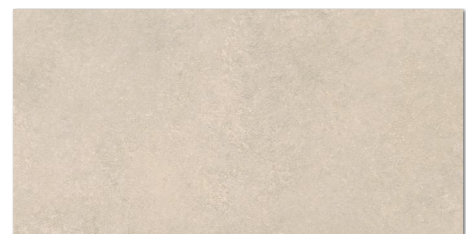
R10

B

V3

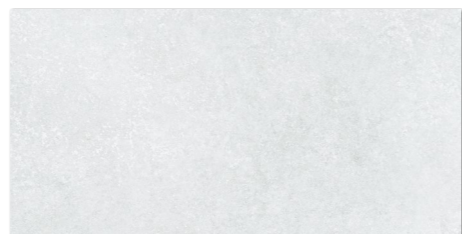
R+

9mm



DAKSR840
PEI 4
mat | matt | R

DAASR840
PEI 4
mat | matt



DAKSR837
PEI 5
mat | matt | R

DAASR837
PEI 5
mat | matt



DAKSR838
PEI 4
mat | matt | R

DAASR838
PEI 4
mat | matt



DAKSR839
PEI 4
mat | matt | R

DAASR839
PEI 4
mat | matt

30x60

R10

B

V3

R+

9mm

45x45

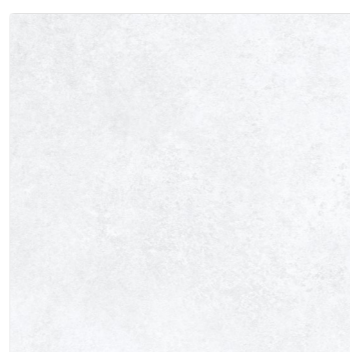
R9

V3



DAA4H840
mat | matt
béžová | beige

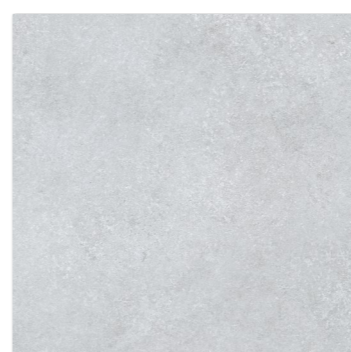
PEI 4



DAA4H837
mat | matt

PEI 5

světle šedá | light grey



DAA4H838
mat | matt

PEI 4

šedá | grey



DAA4H839
mat | matt

PEI 4

tmavě šedá | dark grey

45x45

R9

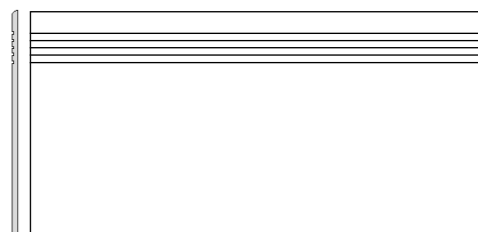
V3

30x60

60x7,2

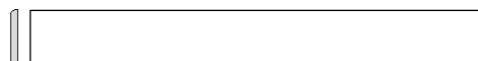
R+

9mm



DCPSR837 světle šedá | light grey
DCPSR838 šedá | grey
DCPSR839 tmavě šedá | dark grey
DCPSR840 béžová | beige

PEI 4-5
mat | matt | R10 | B



DSAS3837 světle šedá | light grey
DSAS3838 šedá | grey
DSAS3839 tmavě šedá | dark grey
DSAS3840 béžová | beige

mat | matt

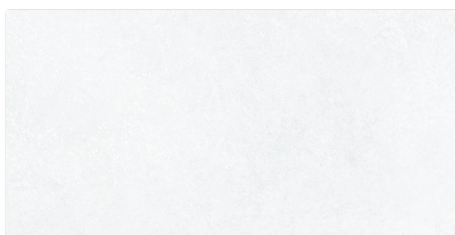
abetone



30×60



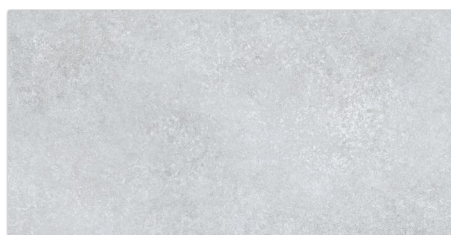
v3



WAKVK837

mat | matt

světle šedá | light grey



WAKVK838

mat | matt

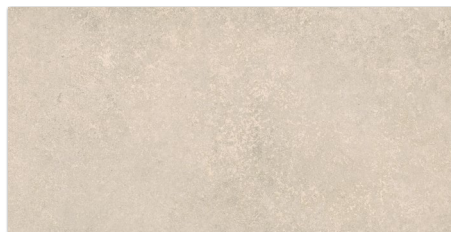
šedá | grey



WAKVK839

mat | matt

tmavě šedá | dark grey



WAKVK840

mat | matt

běžová | beige

Výrobek Product	cm 	mm 	EN 	Balení Packaging 		kg 		m ² 	brutto kg 	
dlaždice floor tile	60×60	598×598×9	EN 14411 - G B Ia	NEUTRAL	4	1,44	27,6	32	46,08	910
dlaždice floor tile	30×60	298×598×9	EN 14411 - G B Ia	NEUTRAL	7	1,26	24,2	40	50,40	993
dlaždice floor tile	30×60	303×602×9	EN 14411 - G B Ia	NEUTRAL	7	1,26	24,2	40	50,40	993
dlaždice floor tile	45×45	448×448×8	EN 14411 - G B Ia	NEUTRAL	6	1,21	21,1	34	41,14	741
sokl skirting plinth	60×7,2	598×72×9	EN 14411 - G B Ia	NEUTRAL	14	0,60	11,5	-	-	-
schodovka step tile	30×60	298×598×9	EN 14411 - G B Ia	NEUTRAL	5	0,90	17,3	-	-	-
obkládačka wall tile	30×60	298×598×8	EN 14411 - L B III	NEUTRAL	8	1,44	21,3	40	57,60	876